



Checkmate 2023R3 New Features

In the latest release of Checkmate, we've added a handful of great new features:

- In Checkmate Listing Manager for eBay, you can now easily [re-list stagnant listings so they look like new listings](#)
- In Checkmate Inventory Pro, [the new MECHANICAL MILEAGE UNKNOWN View](#) helps you quickly find and add mileage to mechanical parts that don't have mileage entered, so they can be graded
- You can now [print part tags to 2 different tag printers](#)
- Checkmate now [warns you if you enter a vehicle with a VIN that you already have in your system](#)

eBay: Relist Stagnant Listings

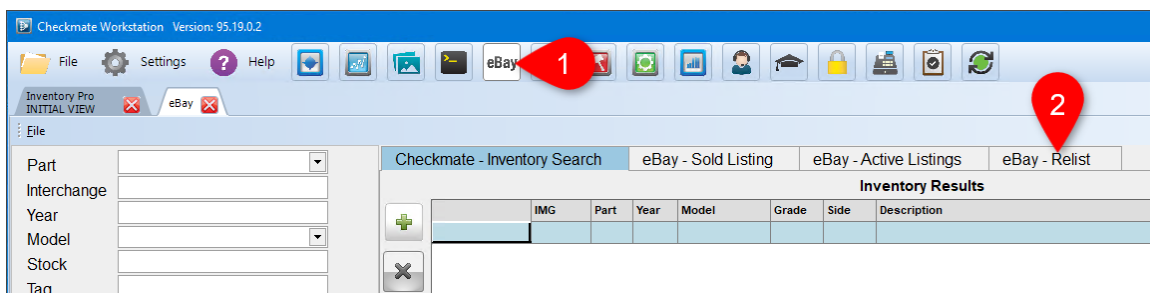
Items that have been listed on eBay for a long time often have poor visibility in search results. Checkmate has a new feature that lets you easily refresh your stagnant listings so they appear like brand new listings in search results. In one easy process, this feature delists the item, changes the eBay ID of the item (but leaves all other information the same), and then relists the item. The result is a refreshed part listing that is treated like a new part listing in eBay search results.

Note: If you select a large number of parts to relist, this process can take some time. During the process, you will be unable to do any other work in Checkmate. If you want to relist a large number of parts, it is recommended that you do so at a time when you will not have to do any other work in Checkmate.

Caution! Before relisting parts, we recommend that you check your eBay store subscription. **eBay may charge fees for relisting parts if you exceed the number of listings that are allotted for your eBay store subscription.** eBay fees depend on your eBay subscription.

Here's how it works:

1. In Checkmate Workstation, click the **eBay** button to open Checkmate Listing Manager for eBay.
2. Click the new **eBay – Relist** tab.



3. On the **eBay – Relist** tab select a **Date Option** to specify which listings you want to work with. (>85 is selected by default.):

- **Date** – Search for listings that were listed on a specific date. When you select this option, the **Start Date** field appears, which you can use to enter/select a date.


- **Date Range** – Search for parts listed within a specified date range. When you select this option, the **Start Date** and **End Date** fields appear, which you can use to select the date range.

- **>30** – Search for parts that were listed more than 30 days ago.
- **>60** – Search for parts that were listed more than 60 days ago.
- **>85** – Search for parts that were listed more than 85 days ago.
- **Custom** – Search for parts that were listed for more than a custom number of days.

4. Click the refresh button. All active listings that match the selected **Date Option** display on the screen.

5. In the column on the left, check the box for each item you want to relist.

Checkmate - Inventory Search		eBay - Sold Listing		eBay - Active Listings		eBay - Relist				
		Date Option								
		>85								
<input type="checkbox"/>	<input type="checkbox"/>	Stock	Year	Model	Part	Interchange	Tag	ItemID	Date Listed	SKU
<input checked="" type="checkbox"/>	<input type="checkbox"/>	10822	1998	PORBOX	EBX	57449B	0000010355	292115282169	05/12/2017	90DDA2AB-0D75-41D6-B704-6ED55FCC7383
<input checked="" type="checkbox"/>	<input type="checkbox"/>	51226	2005	DSPR35	FIR		0000352947	292274592693	09/29/2017	E5792D9D-1AB9-4789-A551-7CAA802A0EFA
<input checked="" type="checkbox"/>	<input type="checkbox"/>	70516	2005	TL	EBX	60854	0000334965	292401908026	01/09/2018	CE83BFD0-C57D-460B-B5AC-FB3213442ECF
<input checked="" type="checkbox"/>	<input type="checkbox"/>	80404	2008	BMWV6	ANT	999676	0000389960	292530057465	04/19/2018	7E0C0CF0-4A7C-427F-BDF6-D2664C7D12DA
<input checked="" type="checkbox"/>	<input type="checkbox"/>	80404	2008	BMWV6	BMT	50198	0000390026	292530057846	04/19/2018	7CE4ECA3-359A-467E-839A-EF88AF97B7E8
<input checked="" type="checkbox"/>	<input type="checkbox"/>	80404	2008	BMWV6	CAL	50721	0000389940	292530057920	04/19/2018	CB25EB58-6560-4619-A365-210A88CD1C59
<input checked="" type="checkbox"/>	<input type="checkbox"/>	80404	2008	BMWV6	CBX	53688	0000390027	292530058043	04/19/2018	5549497B-55F9-4574-B836-05A8EDFCC6EA
<input checked="" type="checkbox"/>	<input type="checkbox"/>	80404	2008	BMWV6	CBX	53695	0000390033	292530058209	04/19/2018	5A742220-0D5F-48D1-B590-406A4C69207C
<input checked="" type="checkbox"/>	<input type="checkbox"/>	80404	2008	BMWV6	CRR	50363	0000389958	292530058449	04/19/2018	07B534EE-EB42-4822-B011-8394E7F3B279
<input checked="" type="checkbox"/>	<input type="checkbox"/>	80404	2008	BMWV6	CRR	50365	0000389992	292530058494	04/19/2018	9BEF7ABA-CF18-4D09-B973-DD9A760D40FD
<input checked="" type="checkbox"/>	<input type="checkbox"/>	80404	2008	BMWV6	FDS	50126	0000389957	292530058859	04/19/2018	465F9BD7-9598-4C65-B5BA-BBB11CA5503F
<input checked="" type="checkbox"/>	<input type="checkbox"/>	80404	2008	BMWV6	HAC	52028	0000389974	292530059225	04/19/2018	DF35880E-3492-4B74-A302-B019C8B39D66

- 6. When you've selected the parts you want to relist, click the relist button.  The relist process begins, with indicators displaying the progress: each selected part will be delisted, and then relisted with a new eBay item ID.

When the process is complete, parts that were successfully relisted will show the current date in the **Date Listed** field. The bottom of the window displays the status, including the number of errors:

<input type="checkbox"/>	E790	1994	MAZ626	COM	58859	1159
<input type="checkbox"/>	H61	1987	STERLI	COM	58161	6002
Listings 213 Delist Items 213 Relist Items 213 Errors 0						
Current Status Gathering eBay data from Checkmate Complete						

- If there are any parts that were unable to be delisted and are still listed on eBay, they will display in red. These items were not updated; all listing information is the same as before the relist attempt. For these parts, follow this relist procedure again at a later time.

Selected Listings	Year	Model	Part	Interchange	Tag	ItemID	Date Listed	SKU	Error	
<input type="checkbox"/>	TYC2010	2007	SILV15	HLP	878B	0000515947	46536542666	10/10/2022	A3112B96-54A1-44B8-BF0B-B72440421FE1	17: This item cannot be accessed because the
<input checked="" type="checkbox"/>	TYC2010	2014	SILV25	HLP	1612	0000515996	66763815730	10/10/2022	B4BF3D46-9438-4C37-A6DD-DD6262269228	17: This item cannot be accessed because the
<input type="checkbox"/>	TYC2010	2012	COLORA	HLP	817	0000515955	75404468439	10/10/2022	A5CCECB0-3D82-4D6D-8658-5CC253946461	
<input checked="" type="checkbox"/>	TYC2010	2012	COLORA	HLP	817	0000515956	92227479584	10/10/2022	812918BF-8CA1-46CA-B07F-73F30B74DEB9	17: This item cannot be accessed because the
<input type="checkbox"/>	TYC2010	2012	COLORA	HLP	818	0000515959	49492008780	10/10/2022	5FD8C31E-6D87-4474-BBF9-7157DE4CE2B	
<input checked="" type="checkbox"/>	TYC2010	2006	AVAL15	HLP	681	0000816176	27277289756	10/10/2022	FB35CA33-862E-4C1C-8BA6-62B56033459C	17: This item cannot be accessed because the
<input type="checkbox"/>	TYC2010	2005	AVAL15	HLP	682	0000516189	50941854104	10/10/2022	337D0730-D900-4DCF-9AF3-F6CBA20CAD1E	

- If the **Checkmate – Inventory Search** tab opens when the process is finished, this means there were parts that were unable to be relisted and are not currently listed on eBay. In this case, the affected parts were added to the **Inventory to Send to eBay** section. For these parts, relist them by going through the normal process of adding necessary information and listing the parts. (If you go back to the **eBay – Relist** tab, these parts may display in either yellow or red.)

Inventory Pro – New View for MECHANICAL MILEAGE UNKNOWN


In Inventory Pro, Views are saved screen configurations that optimize your screen for certain tasks.

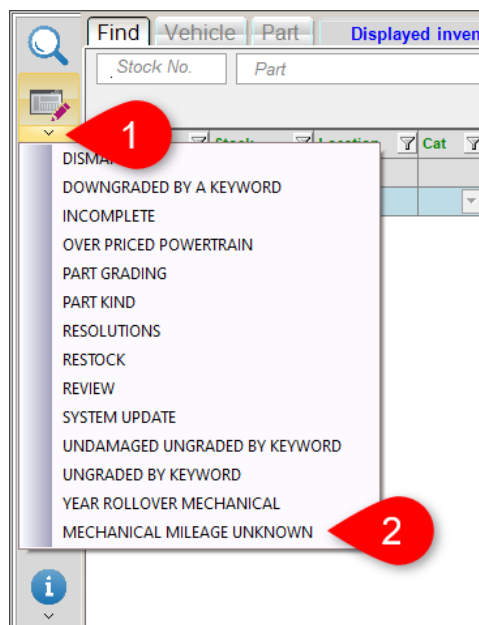
In this release, a new preset (“canned”) View has been added: MECHANICAL MILEAGE UNKNOWN. This View is designed around the part grade audit **Mechanical Mileage Unknown**.

Purpose: Improve inventory information. This View searches for mechanical parts that do not have mileage designated.).


Goal: Add mileage to parts (when possible) so the parts are graded.

To use this View, follow these steps:

1. In Inventory Pro, on the **Find** tab, click the down arrow on the select View button. 
2. Select **Mechanical Mileage Unknown**.



The search fields and information columns are rearranged according to the View, and the **Part Grade Audit** search field is set to **Mechanical Mileage Unknown**. (It may take several seconds to load.)

3. (Optional) If desired, limit your search further by entering criteria in the other available search fields.
4. Click the magnifying glass button  to search your inventory according to the search fields.

- When your search results display, choose a part to work with, and research the part to try to determine the mileage.

Select	Stock	Location	Part	Part Name	Interchange	Year	Model	Grade	Cond	Miles	Cat	Retail	Wholesale	DIS	Keywords	Description	Grade Ok	Status
<input type="checkbox"/>	170122	FTWDIS	ASH-R	AXLE SHAFT-F 61627	2006 VOLV40			X	OMI	U - Used - C	0	Y	47	45	2264	Front, (5 cylinder), FWD, AT, RH FTWCAR		
<input type="checkbox"/>	170122	TK04B4	TRA	TRANSMISSIO 61964	2006 VOLV40			X	OMI	U - Used - C	0	W	50	50	2268	AT, (5 cylinder), FWD, w/o turbo FTWCAR Recycl		
<input type="checkbox"/>	121120	16A10A	ENG	ENGINE ASSEM 88325	1999 PORBOX			C	NIQ	U - Used - C	0	W	458.98	500.28	3785	(2.5 NIQ,HVY BURNI V/N A (5th dig),Rebuildable		
<input type="checkbox"/>	121120	TJ7A2	TRA	TRANSMISSIO 60723B	1999 PORBOX			C	NIQ	U - Used - C	0	W	393	375	3785	MT, (2.5L), NIQ,HVY BURNI(2.5L) FTWCAR 1 Ye		
<input type="checkbox"/>	191019	TJ59C1	TRA	TRANSMISSIO 51910	2012 CLBMAN			C	OMI	U - Used - C	0	W	736	700	1264	bad Clbad C PAH BAD, SENSOR ON SIDE BAD, AT, S model (6 s		
<input type="checkbox"/>	191019	16A1-DIS	UCM	UNDERCARRIA 50318	2012 CLBMAN			X	OMI	U - Used - C	0	W	163	175	1264	Rear		
<input type="checkbox"/>	191019	16A1-DIS	RSA	REAR SUSPEN 50519E	2012 CLBMAN			X	OMI	U - Used - C	0	W	131	125	1264	(without crossmember), w/o sport suspension opt		
<input type="checkbox"/>	191019	16A1-DIS	RSA	REAR SUSPEN 50520E	2012 CLBMAN			X	OMI	U - Used - C	0	W	131	125	1264	(without crossmember), w/o sport suspension opt		
<input type="checkbox"/>	191019	16A1-DIS	KNE-R	KNEE ASSEMB 50400H	2012 CLBMAN			X	OMI	U - Used - C	0	W	131	125	1264	+550w/CONTROL ARM sport suspension option, Ri		A
<input type="checkbox"/>	191019	16A1-DIS	RDO	AUDIO & VISU 54320	2012 CLBMAN			X	OMI	U - Used - C	0	W	105	100	1264	navigation (single disc player),FTWCAR		
<input type="checkbox"/>	191019	16A1-DIS	RDO	AUDIO & VISU 51715	2012 CLBMAN			X	OMI	U - Used - C	0	W	105	100	1264	amplifier (Harman Kardon),FTWCAR		
<input type="checkbox"/>	191019	16A1-DIS	STG	STEERING GEA 50263A	2012 CLBMAN			C	OMI	U - Used - C	0	W	78	75	1264	bent C LH POSS BENT,Power Rack and Pinion, S model, 16		
<input type="checkbox"/>	191019	16A1-DIS	AFM	AIR FLOW MET 50172	2012 CLBMAN			X	OMI	U - Used - C	0	W	78	75	1264	S model,FTWCAR		

- To see more information about the part and the vehicle on the **Vehicle History** window, click the blue info button.

- Add mileage for the part, if possible:

- Double-click the part to open it for editing on the **Part - Edit** tab. Type the mileage in the **Miles/Cond** field, and then click the save button to return to your search results on the **Find** tab.

Inventory Pro
MECHANICAL MILEAGEUNKNOWN

Find - Vehicle - Part - Edit | Displayed inventory (2705) | Searched inventory (2705)

Stock No: 5492 | Yard: 999 | Kind: U - Used - OEM

Year: 02 | Dismantle to: | Category: Warehouse

Model: JETTA EXCEPT GLI | Location: 31B32B

Part: SDO | Grade: X | ?

Interchange: 62159 | Inc Assy: N

Miles/Cond: 130000 | Date Code: | Grade Ok:

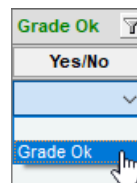
Description: (cluster), Sdn, 1.9L (turbo diesel), MPH, AT, 1J0 920 906KX, 1 911 221 3685, 130K

Keywords:

Local	Region	Global	Requests
0	3	9	0

Price Book | Imaging | History

- If you are unable to determine mileage for the part (or if the part doesn't have miles), and you no longer want the part to appear on any audits, mark it as **Grade Ok**.
 - Single part: In the **Grade Ok** column, click the drop-down arrow, and select **Grade Ok**.
 - Multiple parts: Check the checkboxes in the **Select** column, then click the **Grade Ok** column's **Yes/No** button to bulk edit all of these parts.



- Repeat step 5-6 for each part.

- When you're finished, click the save button.

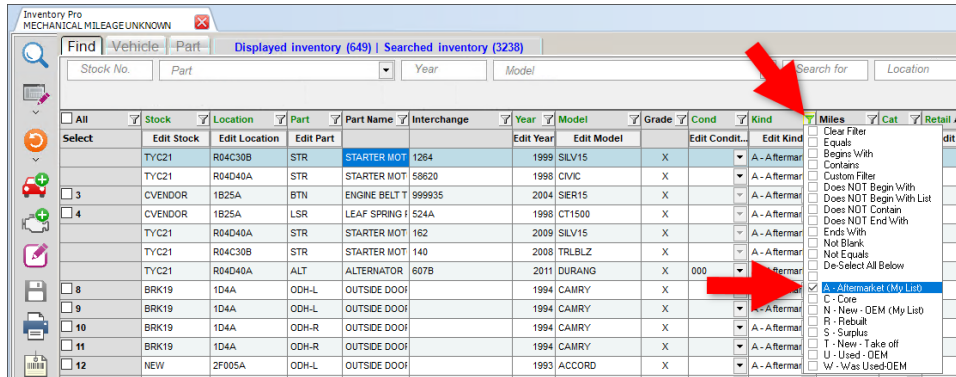
Filter and Remove Part Kinds with No Miles from Mechanical Mileage Unknown View

For some part kinds (e.g., aftermarket or remanufactured), mileage is not applicable. If you have a lot of these parts in the **Mechanical Mileage Unknown** View, you can mark them as **Grade Ok** so they will not appear in audits in the future. To do so:

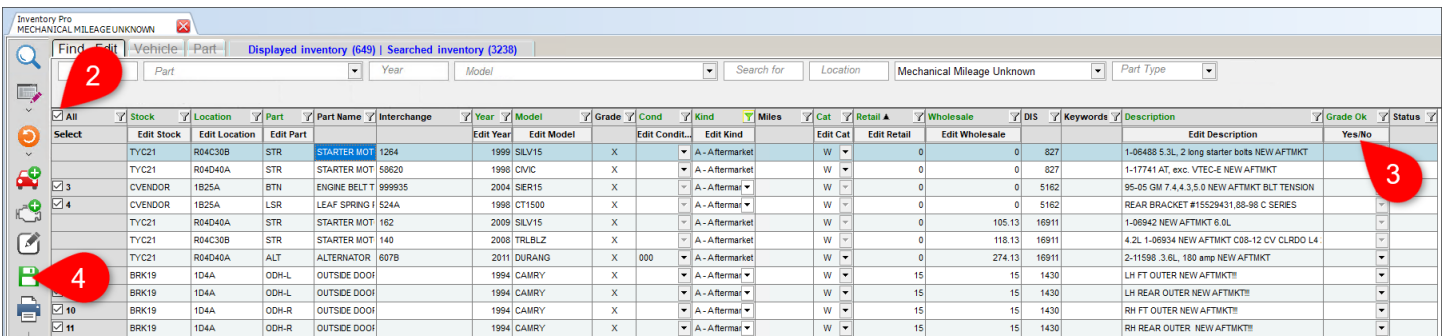
1. After you've selected the MECHANICAL MILEAGE UNKNOWN View (following steps 1-4 of the previous section), filter your search results to show only these part kinds that have no mileage.

At the top of the **Kind** column, click the filter icon and check the boxes to display *only* the part kinds with no mileage that you want to remove from this view (e.g., **A – Aftermarket (MyList)**).

Your results will be filtered to display only the part kinds that you selected.



2. On the top left, check the **All** checkbox to select all visible parts.
3. In the **Grade Ok** column, click the **Yes/No** button so **Grade Ok** displays in this column.



4. Click the save button.  These parts will no longer appear in future audits.

Print Part Tags to Multiple Tag Printers

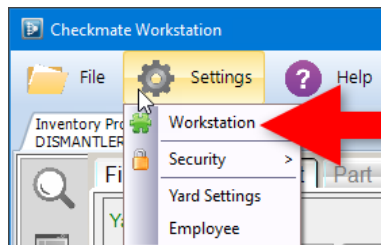
In Checkmate, you can now print 2 tags for parts by printing to 2 tag printers at once. Keep reading to see how it works.

Note: In order to print part tags to two printers, your Checkmate settings must be set to use universal tags and the second tag printer must be added to your Checkmate server. If you want to use this feature, please contact your Checkmate support tech to complete the necessary setup.

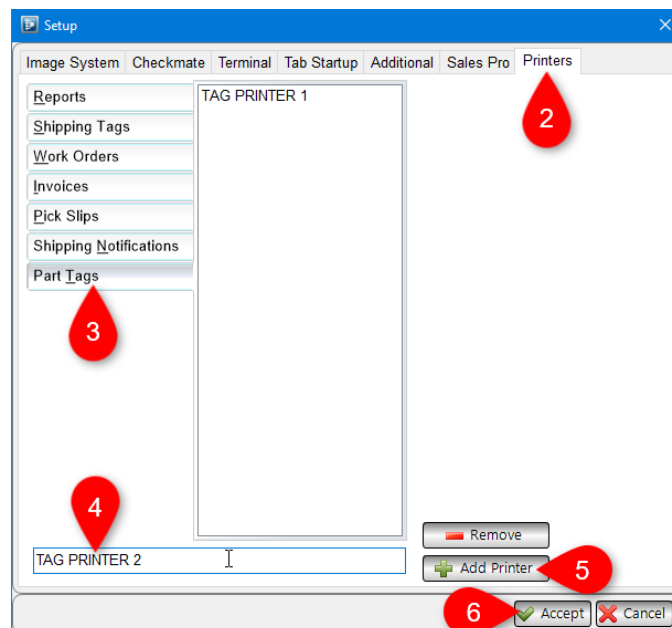
Add Second Tag Printer to Workstations

After the tag printer has been added to your Checkmate server, you must add it to each workstation that you want to use it:

1. In Checkmate Workstation, go to **Settings>Workstation** on the menu bar.



2. Click the **Printers** tab.
3. On the left, click **Part Tags**.
4. In the field at the bottom of the tab, type the name of your second tag printer (this must match how the printer was set up on the server).



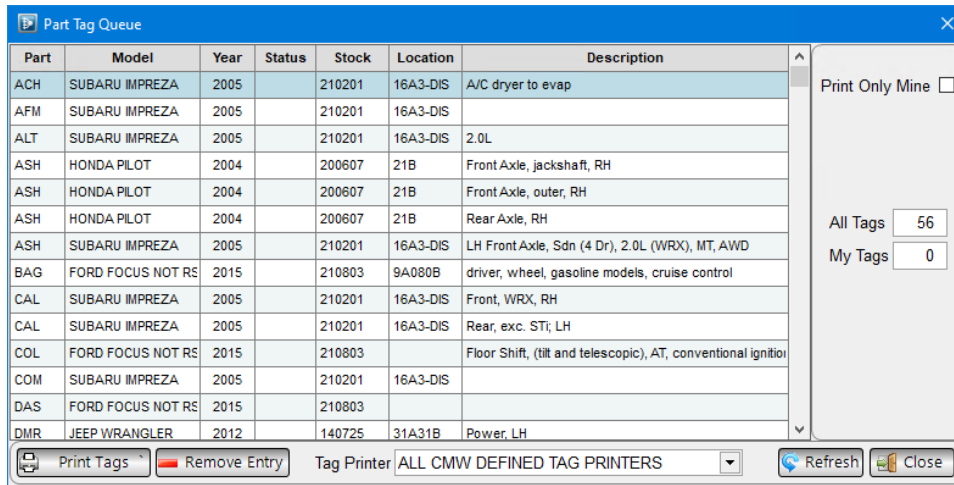
5. Click **Add Printer**.
6. Click **Accept**.
7. Repeat these steps on each workstation you want to print to 2 tag printers.


Printing Part Tags

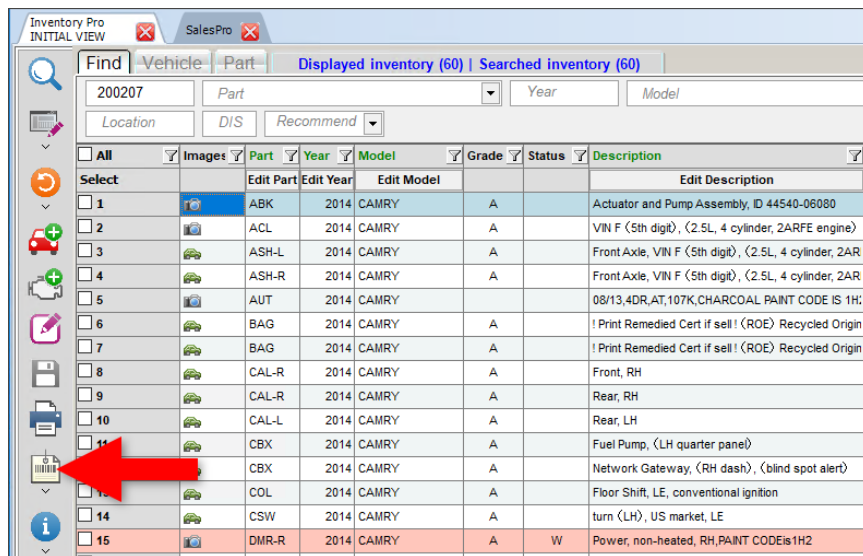
Once you have your second tag printer set up, you can print tags to both printers.

On the **Part Tag Queue** window, you can select a tag printer in the **Tag Printer** field. In this field, make your selection based on how many tags you want to print for each part:


- Print 2 tags for each part – Leave the default **ALL CMW DEFINED TAG PRINTERS** option. When you click **Print Tags**, both printers will print a tag for each part.
- Print 1 tag for each part – Click the **Tag Printer** down arrow and select the printer you want. When you click **Print Tags**, only the selected printer will print a tag for each part.



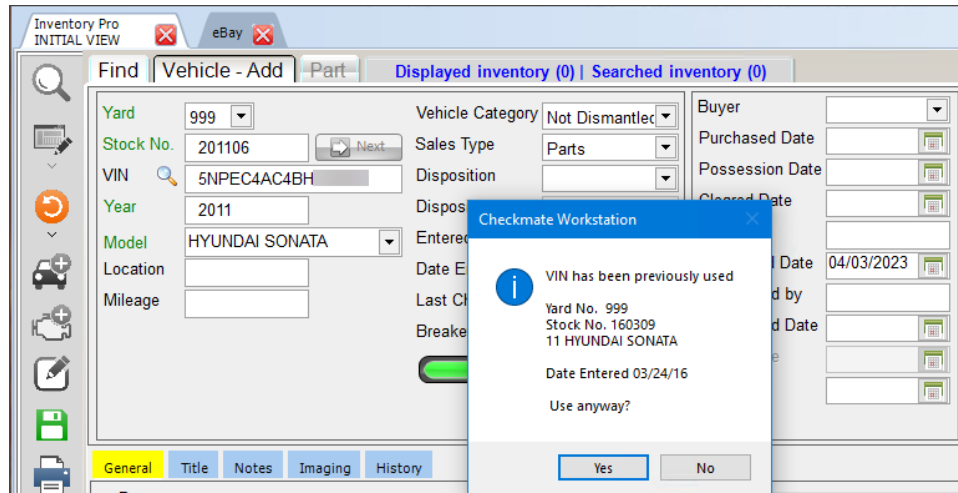
If you are set up to print tags on 2 printers, when you click directly on the tag button  in Inventory Pro (not on the down arrow), 2 tags will print for the selected part, 1 on each tag printer you have set up.



Inventory Pro – Warning on Previously Used VIN

In Checkmate Inventory Pro, Checkmate will now warn you if you attempt to add a vehicle with a VIN that is already in your Checkmate system. When you're adding a vehicle on the **Vehicle – Add** tab, when you click the save button , if another vehicle record has the same VIN as the one you entered, a message displays warning that this VIN has been previously used, asking if you want to use the VIN anyway:

- **Yes** – Click to save the record with the VIN without changing it. The vehicle will be added with that VIN.
- **No** – Click to *not* save the record, and edit the VIN before saving.



Getting Help

For more information about this product, including access to online training videos and documentation, visit Products.Car-Part.com for our recycler resources.

Car-Part.com takes customer service seriously. We have a variety of support options available to help you if you have questions about our products or if you need help for any reason. Your questions are very important to us and we want your experience to be a positive one. Please contact us with any questions or concerns using any of the following methods.

Phone Support

If you have a question not covered in this guide, Car-Part.com offers phone support. Please call 859-344-1925 with your questions.

Online Support using Car-Part Messaging (iCPM)

Support technicians are available online using Car-Part Messaging (iCPM) support rooms. These technicians are available LIVE to help answer any questions you may have.

The support rooms are staffed Monday–Friday, 8:00AM–6:00 PM Eastern Time.

To enter an iCPM support room:

1. Double-click the **iCPM** icon on your desktop.



2. **Car-Part Messaging** opens.
3. Double-click the name of the **Support Room** from your bookmark list.
4. Type **HELP** and a brief explanation of your issue. A Car-Part.com support technician will answer and help with your issue.

Training

If you have ongoing training needs, Car-Part.com has a team of product training specialists to help you learn how to use our products quickly. If you are interested in product training, please call our training department at 859-344-1925 and a trainer in your area will call to schedule training.

Comments

We welcome your comments and suggestions concerning the content and organization of this guide as well as the accuracy and the usability of the instructions it contains. Email us at documentation@car-part.com. We're listening!

Published by

Car-Part.com

1980 Highland Pike
Ft. Wright, KY 41017

Copyright © 2023 by Car-Part.com. All rights reserved.

The information contained herein is confidential proprietary information of Car-Part.com. No part of the information contained in this document may be reproduced, transmitted, or disclosed to any other person without the prior written consent of Car-Part.com.

Bidmate, Car-Part.com Demand Data, Advanced Bidmate, Partmate, Partmate Review, Desktop Review, Advanced Partmate, \$martList, Photomate, Checkmate Rest Server, Car-Part Messaging, Car-Part Interchange, Car-Part Interchange Plus, iCPM, Live Service, Live Chat, Coremate, Core Pricing, Checkmate, Checkmate Listing Manager, Checkmate Sales Pro, Checkmate Workstation, Fast Parts, FastNnet, Car-Part Exchange, Trading Partners, Compass, Orion, SmartVin, Smart Interchange, Order Trakker, Car-Part Auction, CrashLink, Car Part Pro, Desktop Review, Partmate Review, Labelmate, Car-Part EMS Pro, Integrated Car Part Pro, iPro, Car-Part Gold, and Tagmate are trademarks of Car-Part.com.

Car-Part Interchange information is © 2005-2023. The Hollander Interchange is included with or is the basis for the Car-Part Interchange. The Hollander Interchange is © 2023 Claims Services Group, Inc. Some of the information available through this product contains material that is reproduced and distributed under a license from Ford Motor Company. No further reproduction or distribution of the Ford Motor Company material is allowed without the express written permission of Ford Motor Company.

All other product and company names mentioned herein are the property of their respective owners.

This edition obsoletes all previous editions.